

RESOLUTION NO. 2021-02

TO ADOPT A WARD PLAN AND TO COMBINE
MUNICIPAL WARDS FOR VOTING PURPOSES

WHEREAS, Wisconsin Statutes, Section 5.15 requires all cities, village and town with a population of 1,000 or more to establish municipal wards based on the results of the 2020 census, and

WHEREAS, Section 59.10(3)(b)1 of the Statutes require that each county board adopt and transmit to each municipal governing body in the county a tentative county supervisory district plan, dividing the county into districts and designating the approximate location and population of each ward proposed to effectuate the division of the county into districts. The Dane County Board of Supervisors has submitted such a tentative Dane County Supervisor District Plan, and, the Town of Roxbury has received the tentative Dane County Supervisory District Plan, and,

WHEREAS, the Wisconsin Statutes 5.15(4)(a)(a), Except as provided in par. (c), the division resolution shall number all wards in the municipality with unique whole numbers in consecutive order, beginning with the number one, shall designate the polling place for each ward, and shall describe the boundaries of each ward consistent with the conventions set forth in s. 4.003.

NOW, THEREFORE BE IT RESOLVED that the Town of Roxbury adopts the wards as described as follows:

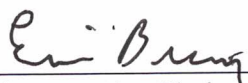
<u>Ward Number</u>	<u>Description of Ward</u>	<u>Population</u>	<u>Polling Place</u>
1	See Attached	943	Roxbury Town Hall
2	See Attached	928	Roxbury Town Hall

BE IT FURTHER RESOLVED, that Wards 1 and 2 created above are hereby combined for voting purposes, so as to share the common polling place indicated, and such combined wards shall not be maintained for the combined wards at any election, except where separate ballots are required under Section 5.58 to 5.65 of the Statutes, and separate ballots or voting machines shall be maintained for any electors of one or more of the combined wards who are ineligible to vote for any office or referendum for which other electors in the combined wards may vote; the designated polling place for Wards 1 and 2 is at the Roxbury Town Hall.

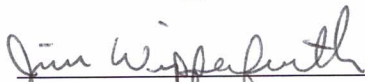
BE IT FINALLY RESOLVED, that upon passage, a copy of this resolution shall be filed with the town clerk, who shall transmit a copy of the ward plan and this resolution to the County Clerk within five (5) days of its adoption and that this resolution shall remain in effect for each election until modified or rescinded, in accordance with Wisconsin Statutes, or until a new division is made following the next federal decennial census.

Adopted the 9th day of November, 2021

Ayes 3 Nays 0



Ervin Breunig, Chair

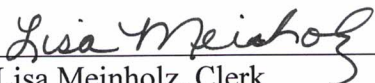


Jim Wipperfurth, Supervisor 1



Mike Bradley, Supervisor 2

Attest:



Lisa Meinholz, Clerk

WARD 1

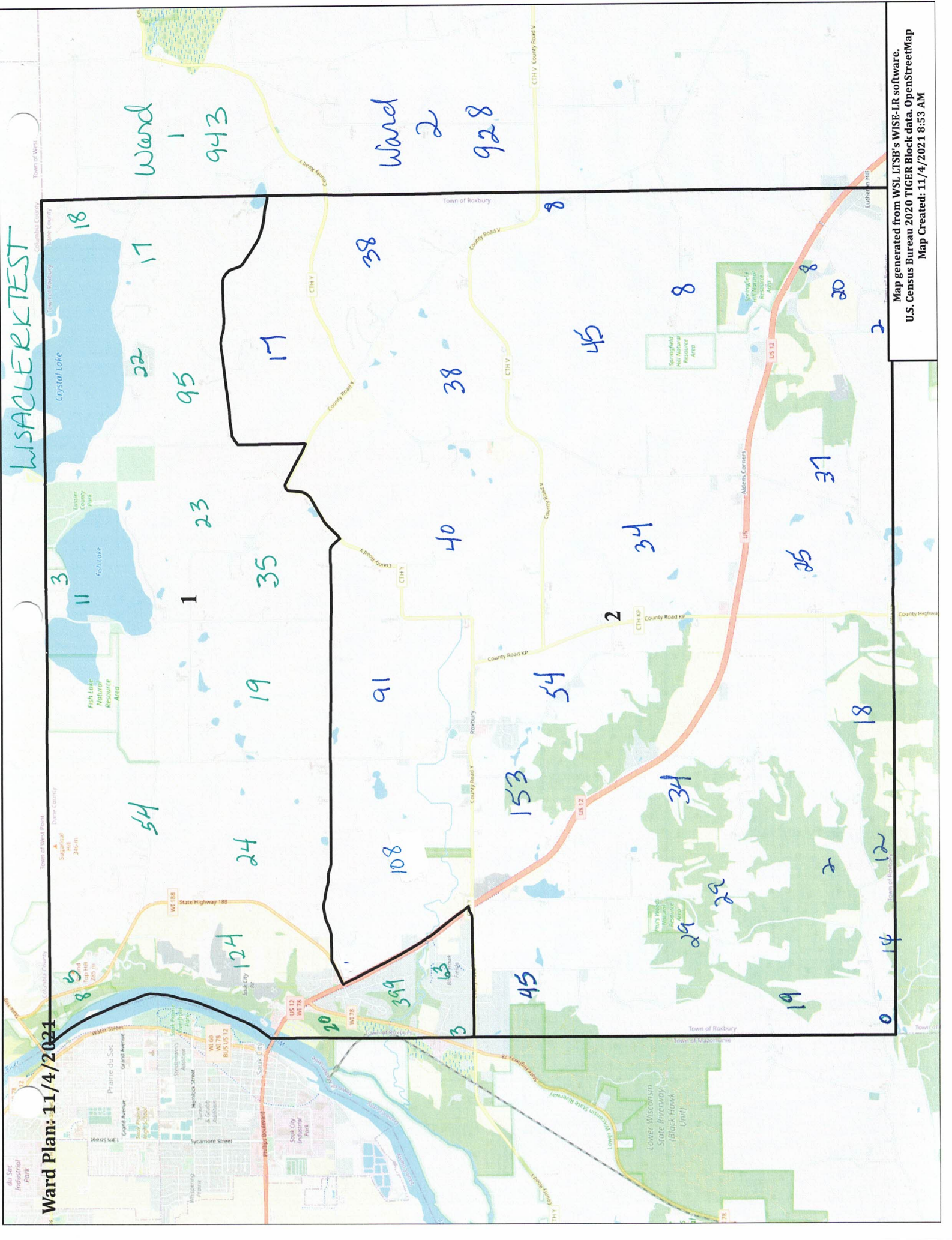
North of CTH-Y from West of Town Line to STH 12, North to STH 188, East to Mack Rd, East to CTH Y, East to Mussen Rd., North to Kruchten Rd, East to East Town Line

WARD 2

South of CTH- Y from West of Town Line to STH 12, North to STH 188, East to Mack Rd, East to CTH Y, East to Mussen Rd., North to Kruchten Rd, East to East Town Line

WISACLERKTEST

Ward Plan: 11/4/2021



[illegible]

[illegible]