

ROXBURY SANITARY INFILTRATION REDUCTION PROJECT

PROJECT RECAP – *Almost done!*

The three main components to the Infiltration Reduction Project—lining the sewer main, manhole rehabilitation and lateral repair—are near completion. The contractor started by lining the sewer mains, then completed the manhole rehabilitation, and is currently working on lining individual laterals. See the chart below for timelines.

PROJECT SCHEDULE

Sewer Main Lining	April 1 – 8 (completed)
Manhole Rehabilitation	April 8 – 22 (completed)
Laterals (Open Cut)	April 8 – 29 (completed)
Lateral Lining and Grouting	June 1 – June 30
Manhole Adjustments on CTH Y	July 13-17, 2020
Final Resolution to Assess (after completion of construction)	Sept. 2020
Special Assessment Letters sent to Property Owners (with costs)	Sept. 2020

Cleanouts on Laterals

The contractor installed cleanouts on many, but not all, of the laterals that are being lined. This will assist the contractor to install the liner in the lateral. As if that wasn't ugly enough☹, an orange barrel was placed over each of the cleanouts (this is temporary). Although this was done for the safety of the homeowner, and because some settling of the fill was expected around the cleanout, *RSD appreciates that you are putting up with this inconvenience while the work on your lateral is being completed.*



After the contractor has completed lining all the laterals, the cleanout will be cutoff approximately 12 inches below ground level, and the lawn area will be filled, compacted, topsoiled and re-seeded.



RSD will share the impacts on the treatment plant and lift station as this project is completed. There appears to be a trend in the right direction (lower flows) being treated at the plant since this project started. RSD will communicate the engineer's analysis and evaluation of the impacts of this project as more data is collected. Stay tuned.....!

HOW DO I STAY INFORMED?

Go to: town.roxbury.wi.us
Click **Roxbury Sanitary District** then click **Infiltration Project**. You'll find meeting agendas, meeting minutes and newsletters.

QUESTIONS?

Gail Lamberty
Roxbury Sanitary District
(608) 643-8017
gail@merr.com

Kathy Jennings
MSA – Project Engineer
(608) 963-3905
kjennings@msa-ps.com

Roxbury Sanitary District

June 11, 2020

town.roxbury.wi.us



Getting liner ready for installation in the sewer main

Lining the sewer main



Installing the liner in the sewer main

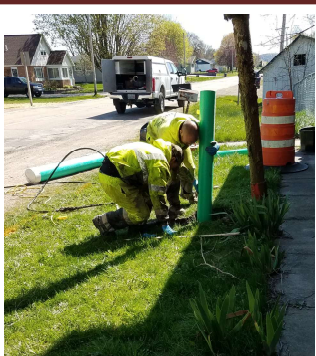


The final step – steam is used to cure the liner

Installing Cleanout for lateral



Vac Truck used to install cleanout



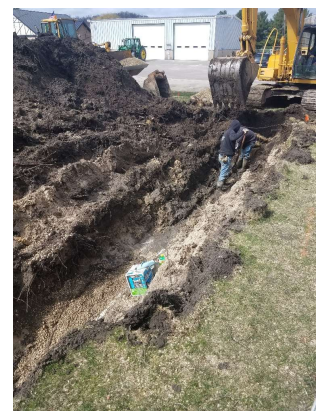
Very precise work!



Prepping a manhole for rehabilitation work



Open cut repair of lateral



Open cut repair of lateral

Spot Repair

