

Dane County Highway Y - Part 1

Starting Intersection:

USH 12

Ending Intersection:

CTH KP

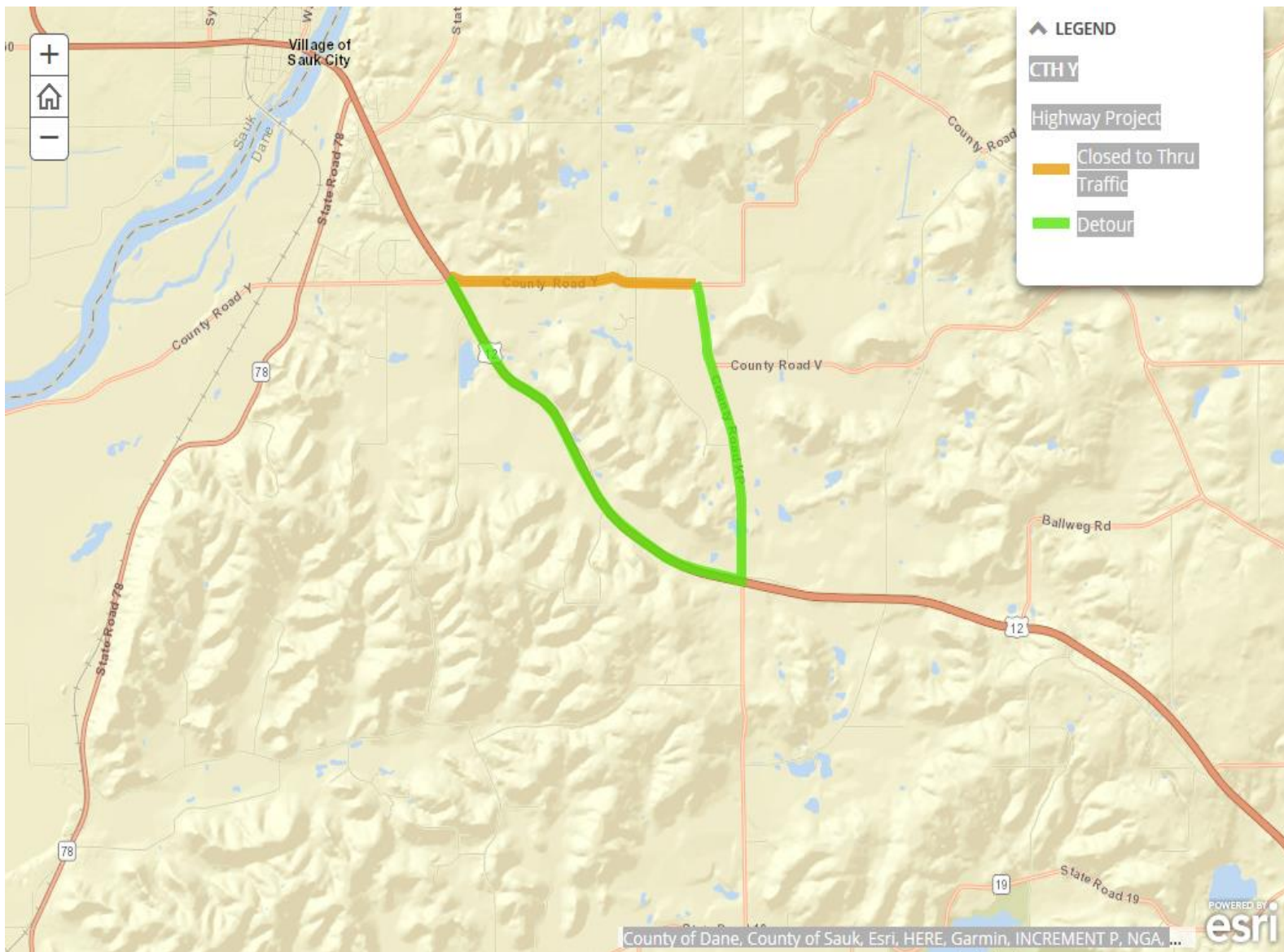
Dates:

May to July 2020

Project Information

Dane County will replace culverts and a bridge structure, widen the road base and construct a new pavement along CTH Y. Once the culvert replacements, bridge installation and widening are complete the existing pavement will be overlaid and a new 30-foot wide hot mix pavement will be constructed.

CTH Y will be closed to thru traffic, but open to local traffic during construction. A marked detour will be posted directing traffic to use US 12 and CTH KP around the section of closed road. Culvert/bridge replacements will close CTH Y at several locations, and local traffic will need to use alternate routes around the closure area.



County Highway Y - Part 2

Starting Intersection: STH 78
Ending Intersection: USH 12
Dates: June to August 2020

Project Information

Dane County will replace culverts, widen the road base and construct a new pavement along CTH Y. Once the culvert replacements and widening earthwork along the highway are complete the existing pavement will be overlaid and a new 30-foot wide hot mix pavement will be constructed.

CTH Y will be closed to thru traffic, but open to local traffic during construction. A marked detour will be posted directing traffic to use STH 78 and US 12 around the section of closed road. Culvert replacements will close CTH Y at several locations and local traffic will need to find alternate routes around the closure during construction.

If you have questions regarding the project construction, please contact Kristine Walker, Dane County Associate Highway Engineer at 608.283.1486 or walker.kristine@countyofdane.com.

